

*A BRIEF LOOK AT*

# **AMBASSADOR COLLEGE AGRICULTURE**



*A BRIEF LOOK AT*  
**AMBASSADOR COLLEGE**  
**AGRICULTURE**

# WELCOME TO THE A.C. RANCH

**T**HE Ambassador College Agriculture Department wishes you a hearty *welcome* and hopes you'll enjoy your visit to the Ranch and farm.

Established as a part of the college in 1965, the Ranch is a highly-diversified program operating on 2,500 acres, 240 of which are in cultivation. The remaining area is pasture and timberland. Though much is still in the developmental stage, this land is all being utilized for experimentation and for providing meat, milk, eggs and vegetable produce for the local campus and for the campus in Pasadena, California.

Special work is being done in the areas of soils and plants. The basic and natural principles in the field of agriculture have been lost, overlooked and ignored. Therefore, emphasis is placed on reeducation in this area. We are working to restore varying types of soils to natural fertility and to maintain this fertility by encouraging ecology of mineral, plant, animal and soil life.

Disease prevention and promotion of health through good breeding practices are focused upon in the livestock program. We strive to provide a natural nutritional balance and good sanitary practices. Careful selective breeding improves beef quality, productivity and feed efficiency.

The Agriculture Department, with its motto, *Recapture True Values*, directs its attention to the relationship of the right use of agriculture to happy, healthy human lives.

The main divisions of the Ranch are livestock, including beef breeding and fattening; dairy; horses; poultry, including layers, broilers and turkeys; garden and greenhouse area, producing many types of crops; food processing; soils; pastures and field crops; operations and maintenance of equipment; warehousing; preparation of feeds and fertilizers; and a laboratory for special studies and research.

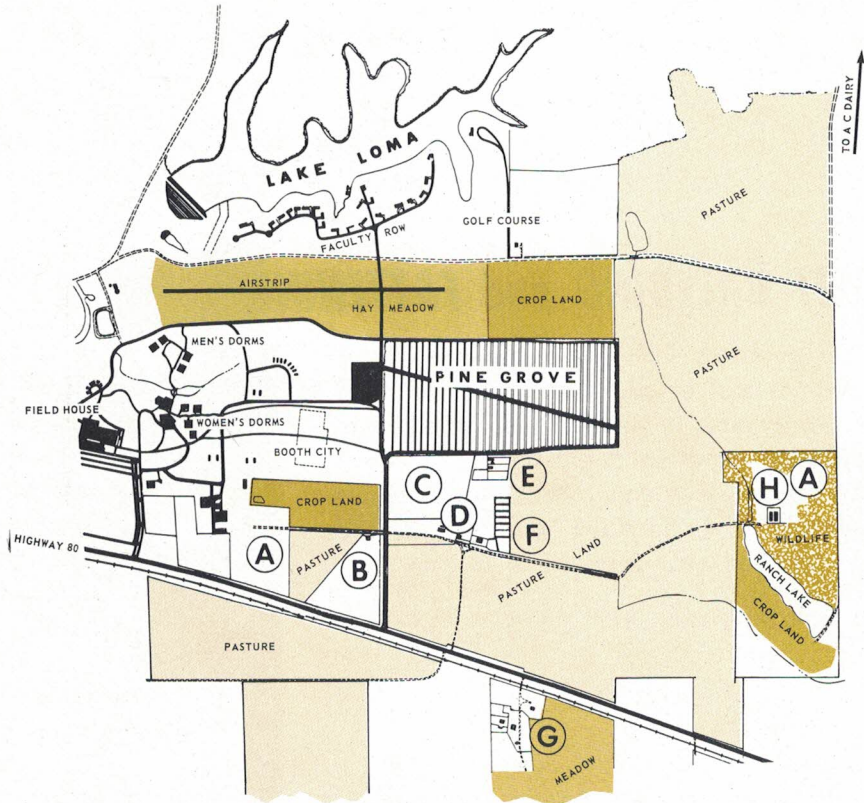
Visitors are always welcome to tour the Ambassador College agriculture operation. Information can be obtained free upon request.

# Ambassador College FARM and RANCH

BIG SANDY, TEXAS

## KEY

- A - Gardens
- B - Stables
- C - Experimental Plot
- D - Warehouse, bins and grinder
- E - Poultry area
- F - Feed lots and Harvestore
- G - Ranch-Farm home
- H - Greenhouses

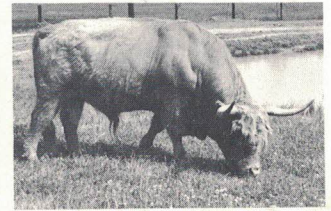
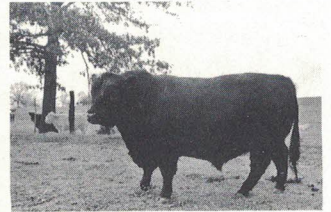
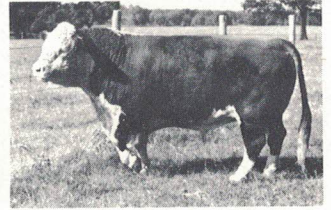
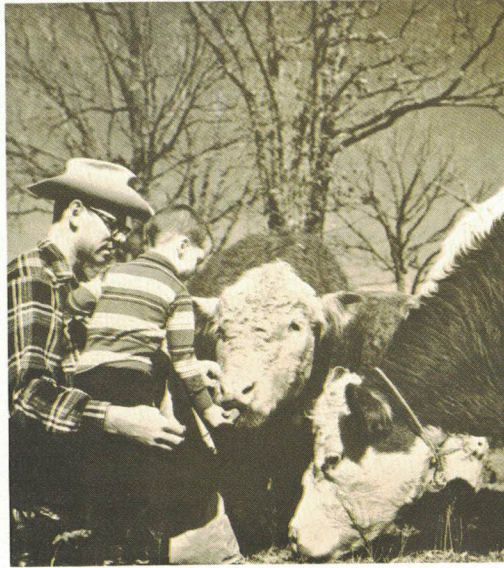


# AND NOW... Your Tour of Ambassador's Agricultural Program

## **BEEF BREEDING and FATTENING**

The Livestock Program includes a variety of types and breeds of animals. The beef breeding herds include Angus, Polled Hereford and Scottish Highland cattle. They are divided into small herds for selective breeding and handling purposes. Cattle are fattened on pastures and in lots.

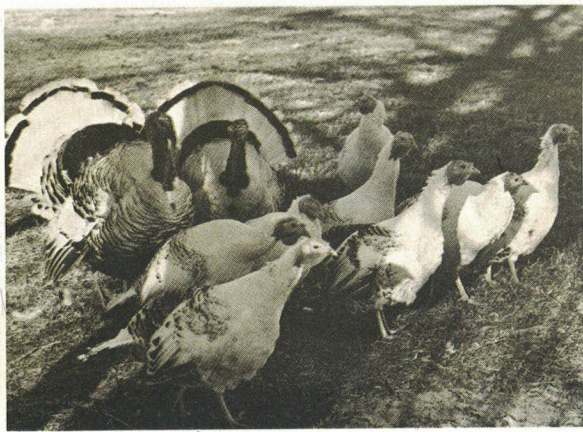
**RIGHT:** Mr. Dale Schurter, Agriculture Instructor, teaches his son about the livestock.  
**TOP RIGHT:** Hereford bull. **CENTER RIGHT:** Top-quality Angus bull feeds on winter hay.  
**BOTTOM RIGHT:** Scottish Highlander bull.





## DAIRY

Brown Swiss cattle provide milk for the college.



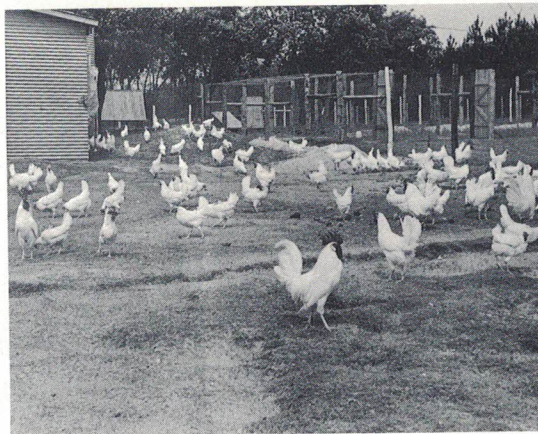
## TURKEYS

A small foundation flock of Royal Palm turkeys is representative of future plans.

**FAR LEFT:** White Royal Palms — toms and hens. **LEFT:** Strutting Bronze-“Breasted” tom — native American turkey.

# CHICKENS

The Poultry Program is utilizing rotated pasture areas and the garden area for production of high quality eggs and meat. The present breeds represented are the white rock, white and brown leghorns:



**TOP:** Feasting fowl crowd around hanging feeder. **BOTTOM LEFT:** Green graze available to poultry. **BOTTOM RIGHT:** Mr. Ted Armstrong surveys egg production.

## HORSES

Horses are kept for work on the Ranch and used for pleasure riding and in the college physical education program.

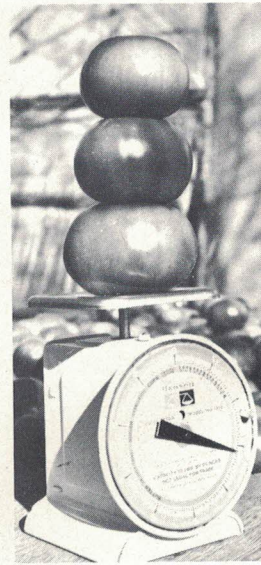


**TOP LEFT:** Physical Education students take advantage of riding opportunities. **TOP RIGHT:** Mr. Moss assisting in family horseback riding. **LEFT:** Roundup brings in the Angus herd.

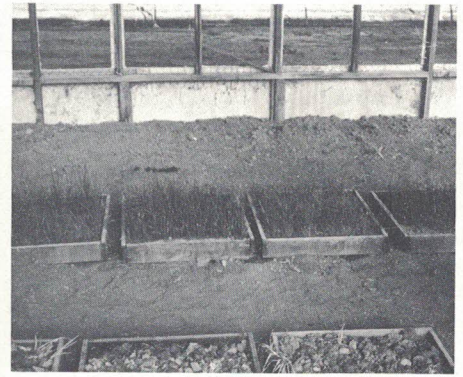


# GARDENS

A large variety of different vegetables is grown in the garden, and plans are progressing for establishing small vineyards and orchards. Greenhouses are being used to produce fresh vine-ripened tomatoes year around.



**TOP LEFT:** A favorite with the students — delicious, juicy watermelon. **TOP RIGHT:** Cultivated rows of cabbage. **BOTTOM LEFT:** Close-up on vine-ripening tomatoes — to be picked when ripe. **BOTTOM RIGHT:** Fruitful production.



LEFT: Prolific carrot crop for the college.  
RIGHT: Greenhouse experimental boxes.



## FOOD PROCESSING

This area receives the raw products produced on the Ranch. Emphasis is placed on natural quality of all Ranch products. The produce is prepared and delivered for immediate use by the college dining hall and faculty, or stored in natural ways for later use.

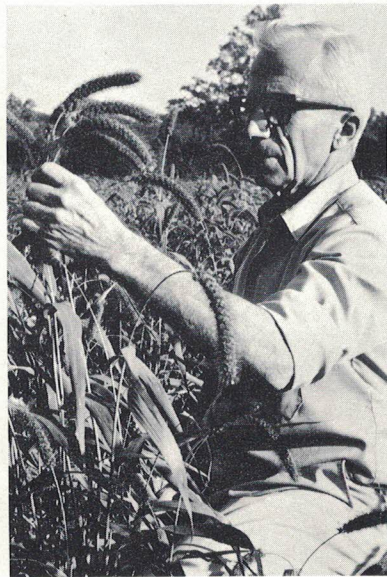
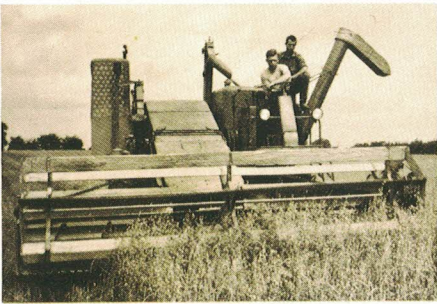
FAR LEFT: Meat Processing Department hanging quarter of beef. CENTER: Portion controlling steaks for faculty dining. IMMEDIATE LEFT: Recording weight of various cuts to determine yield of beef sides.

# SOILS, CROPS and PASTURES

This area is important for the determination of proper land use. Work is being conducted to improve and maintain all soils through natural means. The results are shown by the crops and pastures and the livestock that forage on them.



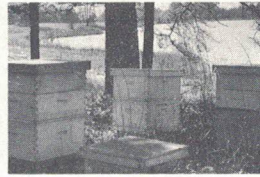
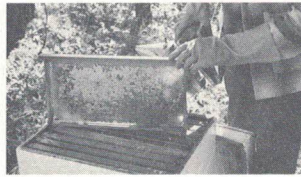
TOP LEFT: Building compost. TOP RIGHT: Inspecting crop of sudangrass. BOTTOM: The Ambassador College Experimental Plot.



TOP LEFT: Harvesting crop of Ora oats. CENTER LEFT: Thick windrows of fertilized Bahia. BOTTOM LEFT: Combining oats. IMMEDIATE LEFT: Examining full heads of Knox wheat. BOTTOM CENTER: Ripening heads of German Millet. BOTTOM RIGHT: Examining corn in the Experimental Plot.

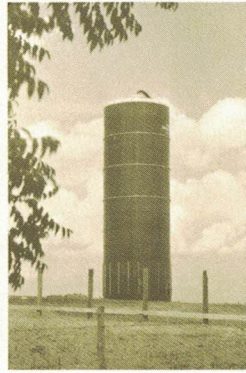
## BEES

Bees are kept scattered around the Ranch to pollinate the many crops and provide honey for the college.

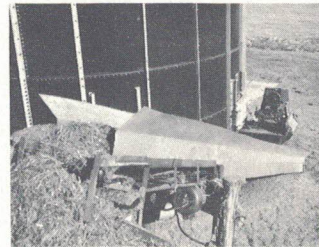


## OPERATIONS and MAINTENANCE

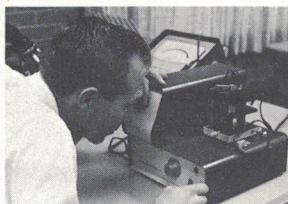
A large warehouse has been constructed for storage and maintenance of equipment used in the Ranch operation. A feed mill and storage bins provide facilities for preparing rations for the livestock and poultry operations. A Harvestore silo helps in providing balanced rations year around. Fertilizer materials used on the Ranch are ground in a large grinder.



**TOP LEFT:** Large building warehouses equipment and basic feed inventory. **TOP RIGHT:** 60-foot glass-lined silo has capacity of 467 tons of corn silage. Haylage is also stored. **BOTTOM LEFT:** Unloading daily winter forage for livestock. **BOTTOM RIGHT:** View of feed mill and grain storage bins near warehouse.



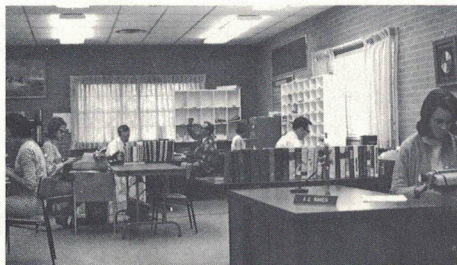
**LEFT:** Microbes, cultured for restoring fertility and life of our soils, magnified here 400 times. **FAR RIGHT:** Comparing soil test results.



## **LABORATORY RESEARCH**

A small laboratory is maintained for analysis of soils, fertilizers, feeds and food products and special research that may be conducted on the college Ranch.

## **OFFICES, RECORDS and CORRESPONDENCE**



As a result of the experimental nature of Ambassador's Agricultural Program, each year there are several thousand requests for additional information. A supply of literature is maintained for those who are interested in additional information. All management records are kept through the Agriculture Operations Office. Records are coded and kept on IBM equipment for easy analysis.



**TOP:** Agriculture Department office facilities. **BOTTOM RIGHT:** Data Processing checking a report.

